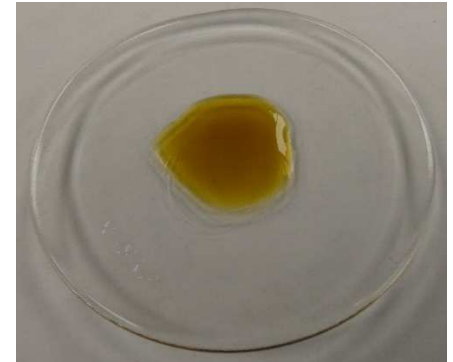


Product:	Whole Plant CBD Infusion	Harvest Source:	Vermont, USA
Description:	Hemp derived CBD whole plant extract in organic hemp seed oil with 2% organic sunflower lecithin.	Cultivar:	Blend
Unit Size:	30 mL	Batch ID:	86590200247
Serving Size:	1 mL	Production ID:	PS201029374
Product Code:	W500H-30	DOM:	24-Nov-20

Quality	Method	Specification	Result	
Total CBD:	AOAC2018.11 (Modified)	> 1500 MG	1503	PASS
Total THC:	AOAC2018.11 (Modified)	< 0.3 %	0.21	PASS
Total Cannabinoids:	AOAC2018.11 (Modified)	Detectable (MG)	1616	PASS
Appearance:	ASTM E1627 - 11	Light amber viscous liquid		PASS
Odor:	ASTM E1627 - 11	Floral, earthy		PASS
Cannabis Terpenes:	9534-GCMS	Detectable (PPM)	427	PASS
Safety	Method	Specification	Result	
Water Activity	DB196-18	< 0.600	0.288	PASS
Solvents:	C5923-GCMS (Internal)	USP 467		PASS
Pesticides:	C5838 LCMSMS/AOAC 2007.01	OAR333-007-0400/EPA		PASS
Mycotoxins:	6614-LCMSMS (Internal)	MDH Exhibit 6		PASS
Heavy Metals:	ICPMS (External Partner)	MDH Exhibit 4		PASS

Product of Vermont USA



Test Method: 9534-GCMS (Internal)

Test Method: AOAC2018.11 (Modified)

Terpene Profile	Parts Per Million	Parts Per Million	Cannabinoid Potency	MG Per Unit	MG Per Serving	
a-Pinene	24	Isoborneol	<2	CBD	1503	50.09
Camphene	<2	Menthol	<2	CBDA	<2.77	<0.09
Sabinene-	<2	endo-Borneol	<2	d9-THC	58	1.94
b-Pinene	<2	a-Terpineol	13	THCA-A	<2.77	<0.09
b-Myrcene	68	g Terpineol	<2	d8-THC	<2.77	<0.09
a-Phellandrene	10	Nerol	<2	CBG	16.6	0.55
Carene	6	Pulegone	<2	CBGA	<2.77	<0.09
a-Terpinene	20	Geraniol	<2	CBN	<2.77	<0.09
D-Limonene	<2	Geranyl acetate	<2	CBC	13.8	0.46
o-Cymene	<2	a-Cedrene	<2	CBCA	<2.77	<0.09
Eucalyptol	9	(E)-b-Famesene	61	CBDV	24.9	0.83
b-Ocimene	<2	Caryophyllene	<2	CBDVA	<2.77	<0.09
gTerpinene	<2	a-Humulene	<2	THCV	<2.77	<0.09
Terpinolene	<2	trans-Neradiol	<2	THCVA	<2.77	<0.09
Sabinene Hydrate	<2	cis-Neradiol	<2			
Fenchone	<2	Valencene	<2			
Linalool	<2	Guaiol	<2			
Fenchol	<2	Caryophyllene Oxide	<2			
Isopulegol	<2	Cedrol	78			
Camphor	<2	a-Bisabolol	137			

Recommended Storage: 20-25 ° C (68-77° F), Refrigerate for long term storage (> 3 months); avoid exposure to prolonged heat and light.

Retest Date: 1-Nov-22

Product Information: Hemp derived whole plant tinctures are intended for oral ingestion; recommended serving size is 0.5 - 1.0 mL.

Approved By:



Representative: Keith Griswold, MS

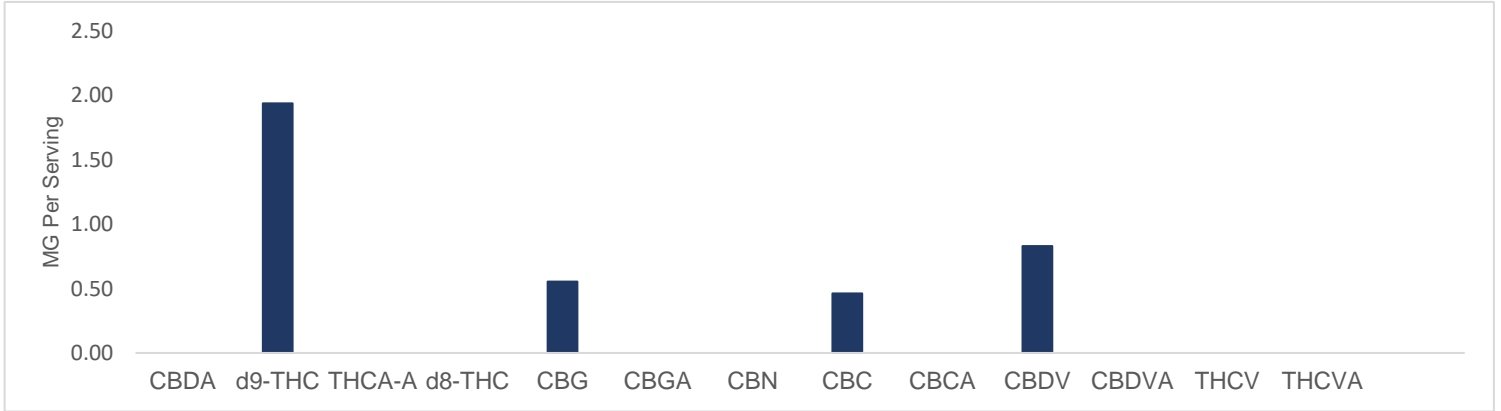
Title: Chief Scientific Officer

Date: 24-Nov-20

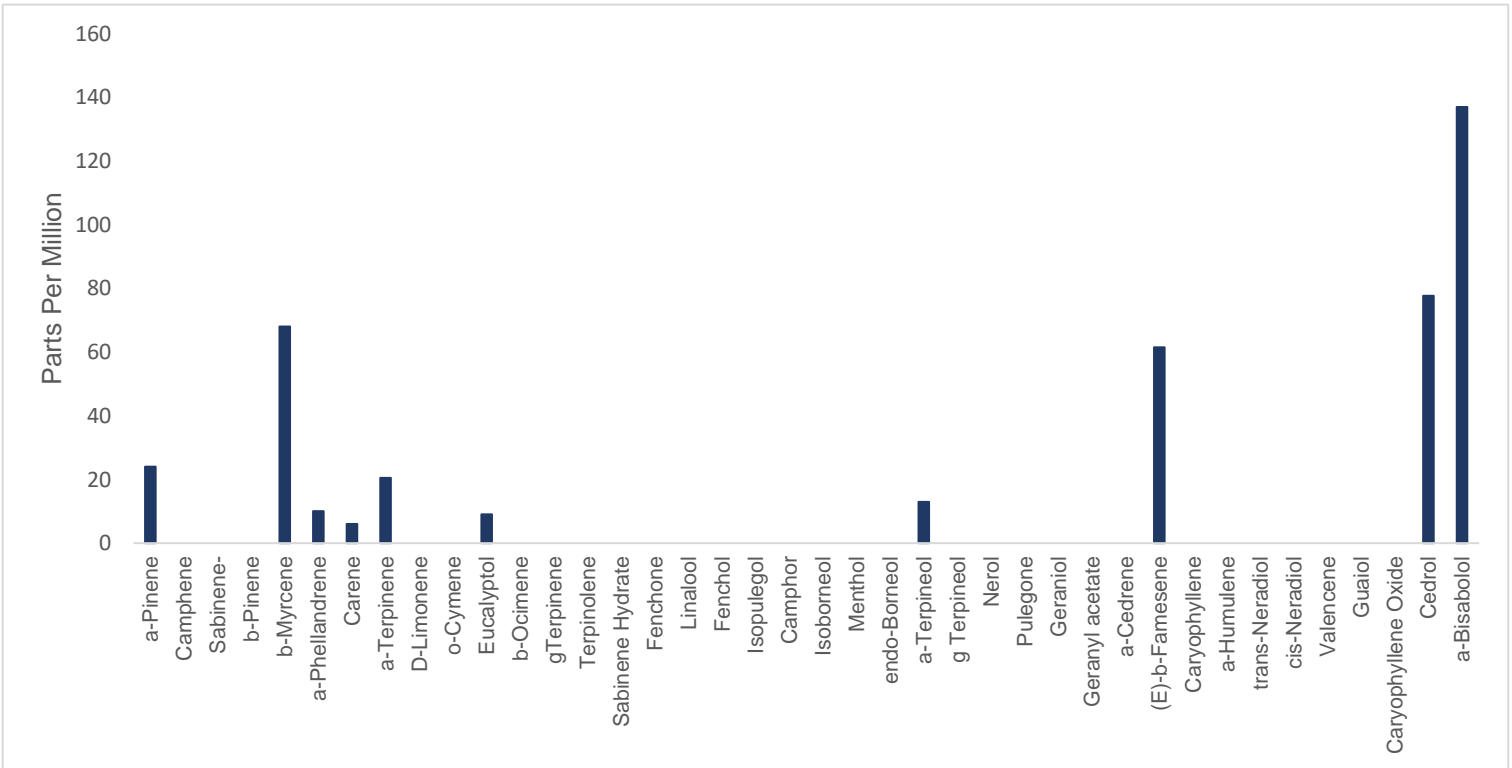


Data reported in this document pertains only to this batch and as sampled according to QMT.PLN.01.03. All rights are reserved to the producer and distributor of this product. Unauthorized reproduction of this data is prohibited. All testing is performed with internally developed test methods that have been verified or validated in accordance to AOAC and ICH guidelines. Test method performance is monitored through control charting.

Batch ID: 86590200247 **Parameter:** Cannabinoid Potency
DOM: 24-Nov-20 **Test Method:** C6198 LCMSMS (Internal); LOQ = 0.005%



Batch ID: 86590200247 **Parameter:** Terpene Profile
DOM: 24-Nov-20 **Test Method:** C5933 GCMS (Internal); Static Headspace; LOQ = 2 ppm



*Terpenes represented of hemp derived before any flavouring is added.

Approved By:



Representative: Keith Griswold, MS

Title: Chief Scientific Officer

Date: 24-Nov-20



Certificate of Analysis

Product Specifications

Batch ID: 86590200247 **Parameter:** Residual Solvents
DOM: 24-Nov-20 **Test Method:** C5923 GCMS (Internal); Static Headspace

Analyte	Units	Reporting Limit	Action Limit	Result	Status
Methanol	%w/w	0.05	0.30	< 0.05	PASS
Pentane	%w/w	0.003	0.50	< 0.003	PASS
Ethanol	%w/w	0.05	0.50	<0.05	PASS
Acetone	%w/w	0.05	0.50	< 0.05	PASS
Isopropanol	%w/w	0.05	0.50	<0.05	PASS
Acetonitrile	%w/w	0.003	0.04	<0.003	PASS
n-Hexane	%w/w	0.003	0.03	<0.003	PASS
Tetrahydrofuran	%w/w	0.003	0.07	<0.003	PASS
Chloroform	%w/w	0.003	0.01	<0.003	PASS
n-Heptane	%w/w	0.02	0.50	<0.02	PASS
Toluene	%w/w	0.003	0.09	<0.003	PASS
m & p Xylene	%w/w	0.003	0.22	<0.003	PASS

*Action limit based on USP 467 requirements for residual solvents Class I, II and III.

Batch ID: 86590200247 **Parameter:** Mycotoxins
DOM: 24-Nov-20 **Test Method:** MCR-TM-0013 LCMSMS

Analytes	Units	Reporting Limit	Action Limit	Results	Status
Mycotoxins	ppb	n/a	20	< 20	PASS

Batch ID: 86590200247 **Parameter:** Pesticides
DOM: 24-Nov-20 **Test Method:** C5838 LCMSMS/AOAC 2007.01

Analyte	Units	Reporting Limit	Action Limit	Results	Status
Bifenazate	ppm	0.50	0.20	Non Detect	PASS
Etoxale	ppm	0.24	0.20	Nondetect	PASS
Imazalil	ppm	0.04	0.20	Non detect	PASS
Imidacloprid	ppm	0.01	0.40	Non detect	PASS
Myclobutanil	ppm	0.02	0.20	Nondetect	PASS
Spiromesifen	ppm	0.40	0.20	Non detect	PASS
Trifloxystrobin	ppm	0.05	0.20	Non detect	PASS
Bifenthrin	ppm	0.16	0.05	Non detect	PASS
Cyfluthrin		6.00	0.05	Non detect	PASS

Reporting limit for all mycotoxins screened is 2 parts per billion (ppb); MRL - maximum residual limit allowed by EPA/Orgeon Regulations

Batch ID: 86590200247 **Parameter:** Heavy Metals
DOM: 24-Nov-20 **Test Method:** PMS (External Partner)

Analyte	Units	Reporting Limit	Action Limit	Results*	Status
As	ppb	43	200	Non detect	PASS
Hg	ppb	37	100	Non detect	PASS
Cd	ppb	28	200	Non detect	PASS
Pb	ppb	23	500	Non detect	PASS

*Derived from hemp contract prior to formulation.

Approved By:



Representative: Keith Griswold, MS

Title: Chief Scientific Officer

Date: 24-Nov-20

